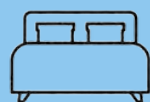


Brassall, Ipswich

Robust Home

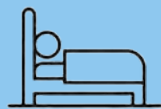


2



Bedroom

1

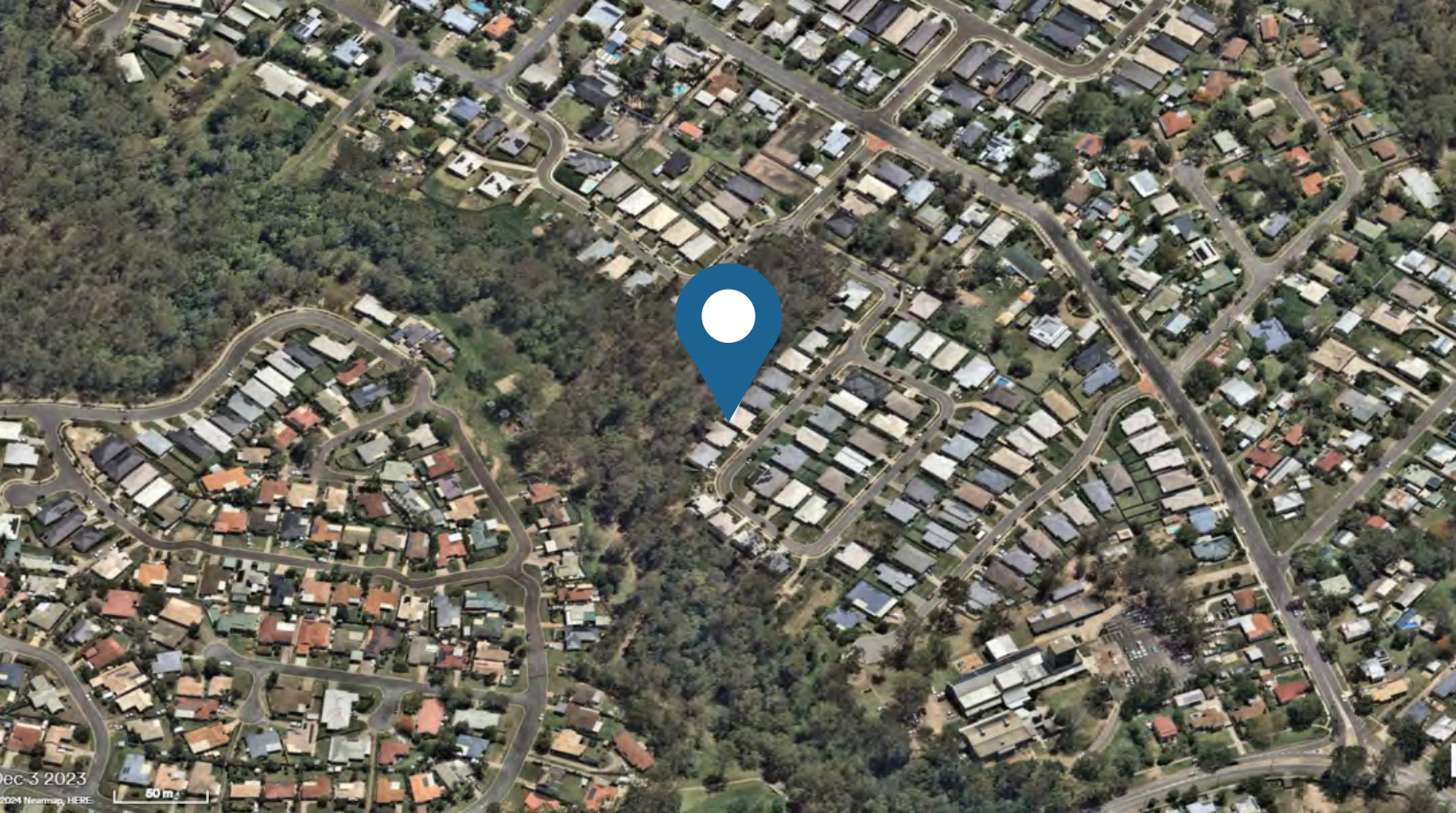


OOA

2



Bathroom



This high-quality living space in Brassall is designed to meet the 2021 NDIS SDA Design Standard for Robust, providing a blend of independence, durability and exceptional support. Just 8 minutes from Ipswich CBD, the property offers prime access to essential services, including medical centres, schools, shopping areas, libraries and beautiful parks, all within easy reach.

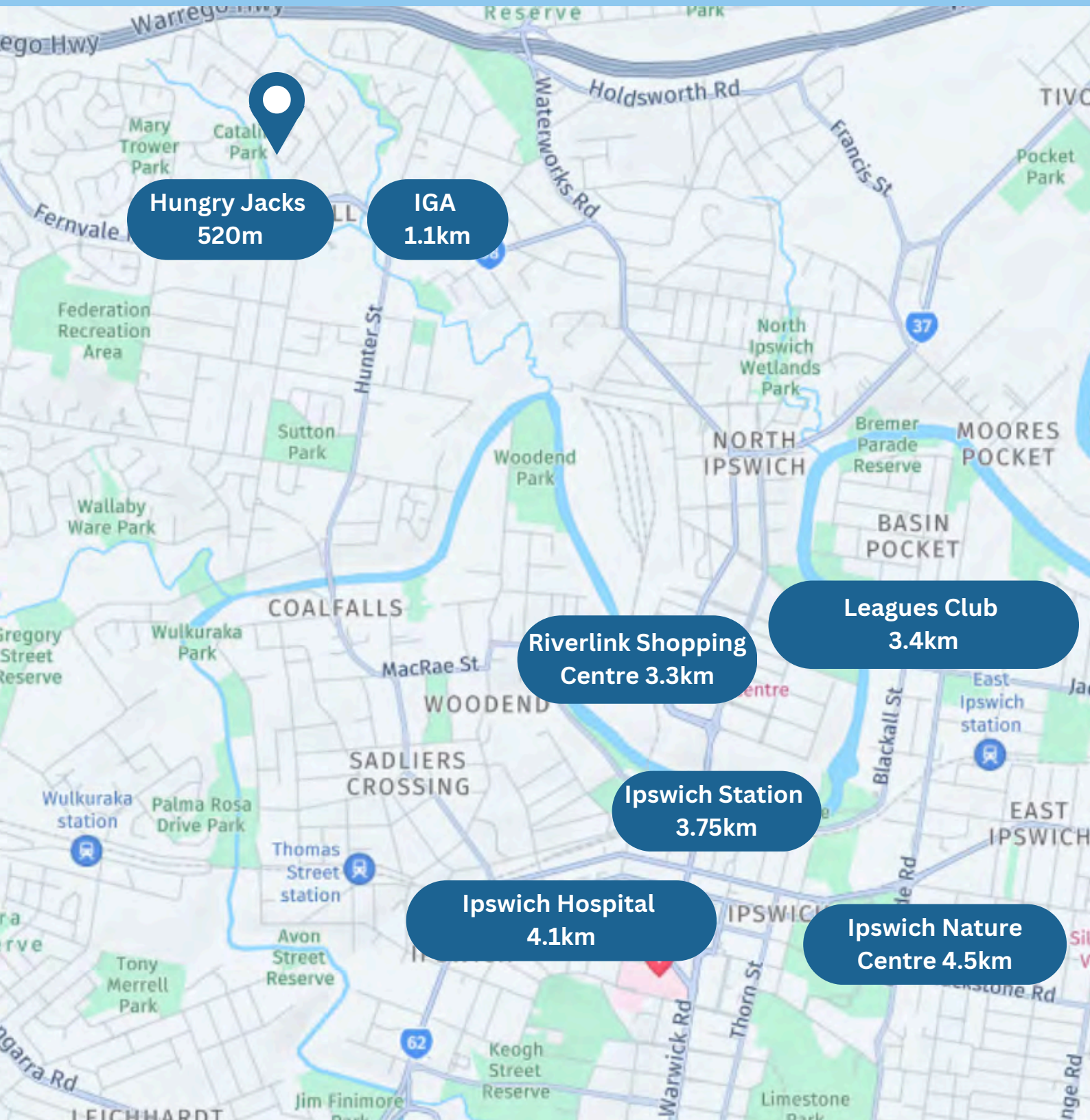
The property boasts a range of robust features, from spacious and soundproofed bedrooms to rounded interior corners and strong windows. This eco-friendly, single-story home also includes a huge backyard, non-slip flooring and wide pathways for ease of movement.

Living in Ipswich means enjoying Queensland's oldest provincial city, with its heritage-rich character, over 6,000 listed sites, and 550 parks. Riverlink Shopping Centre, Ipswich Hospital, and Browns Park are all close by, as are bus and train options for convenient travel.

Robust Inclusions

- Heating and cooling to each bedroom
- Private outdoor living space/alfresco
- Soundproofing to participant bedrooms
- TV and data points to each bedroom
- Large participant bathrooms
- Wifi access points for increased coverage
- Custom kitchen cabinetry with rounded edges
- Vandal proof door handles

Local Amenities



Hungry Jacks
520m

IGA
1.1km

Riverlink Shopping Centre
3.3km

Leagues Club
3.4km

Ipswich Station
3.75km

Ipswich Hospital
4.1km

Ipswich Nature Centre
4.5km

Ipswich

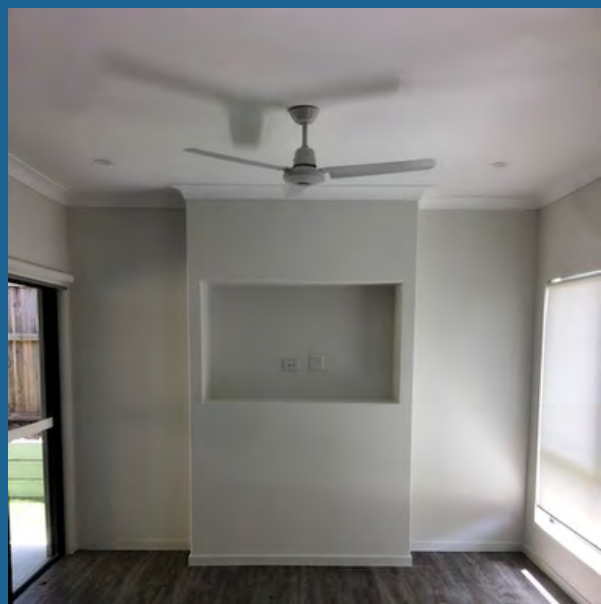
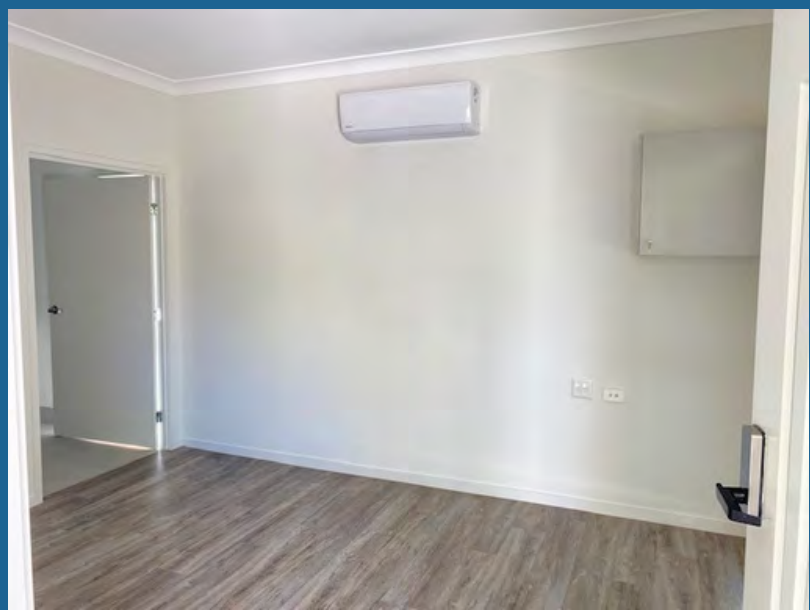
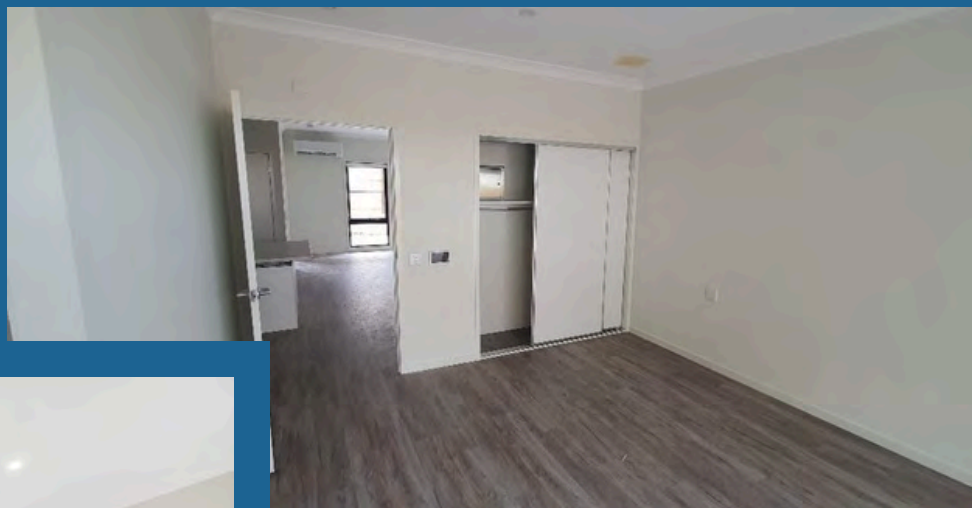
Ipswich, Queensland, is a charming city steeped in history, offering a blend of heritage charm, green spaces and vibrant community life. As one of Queensland's oldest cities, Ipswich is known for its well-preserved historic buildings and architecture, which take visitors on a journey through its rich past. The Ipswich Heritage Trail, guides people through iconic sites and buildings, making it a must-see for history buffs.

For those who love the outdoors, Ipswich has plenty of accessible recreational areas. The Ipswich Nature Centre in Queens Park is a family favourite, offering free entry to see native animals and gardens. There's also the stunning Nerima Gardens, a Japanese-inspired garden that's tranquil and accessible for all.

For adventure seekers, the Flinders-Goolman Conservation Estate provides trails suited to various skill levels, where visitors can enjoy hiking or even scenic picnics with breathtaking views. Riverlink Shopping Centre is popular for shopping, dining, and community events, while the Workshops Rail Museum celebrates Ipswich's industrial past and offers engaging activities for children and families.

Ipswich's community spirit shines through in its local markets, festivals and regular cultural events, like the Ipswich Festival, which brings locals together for live music, art displays and performances. The city also supports a growing arts scene with galleries and creative spaces, like the Ipswich Art Gallery, offering exhibitions that appeal to all ages.





Floor Plan



Submit your interest now

1300 869 203

enquiries@housingervicesaustralia.com.au



SEA
AUSTRALIA GROUP
ALL HOMES – ALL WAYS